

BILOVODSKE PROSPECTIVE AREA WITH TITANIUM – ZIRCONIUM ORES PROMISING ACCUMULATION

Mineral: titanium ores, zirconium ores.

Type and period of subsoil use: 20-years licenses for exploration, pilot development and production.

Location: Sumy region, 1 km south of Yablunivka village, 4 km north of Khrapivshchyna and Korchakivskiyi promising accumulation. The H-07 highway passes through the prospective area.

Plot area: 62 ha.

Geological summary

The geological structure of this area involves deposits from the upper cretaceous (maastricht tier), which are represented by writing chalk, to the quaternary. The top of the upper cretaceous lies at depths of 55–56 m (abs. +168 m); above is a layer of glauconite-quartz sand of Buchach, Kyiv and Mezhyhirya assises with a total thickness of up to 30–32 m. Beretskaya assise lies on the Mezhyhirska one. It includes lower (Zmiyiv) subsuite - sands with glauconite, green leaf clays at the bottom, thickness 7–8 m, absolute marks of the sole +196, +201 m and upper (Syvash) subsuite with mineralization. The Verkhneberetsk deposit consists of light quartz fine-grained sand with thickness from 5.4 to 6.8 m, on average 6.1 m, the bottom mss is from +206 to +208 m. The section is completed by Neogene mottled clays and Quaternary loams with layers of sand with a total thickness of 8–11 m.

Three wells (№№ 29, 226, 227) were drilled on the prospective area during geological extraction at a scale of 1:50000, the distance between them is from 320 to 600 m. The average thickness of mineralized sands is 3.7 m, the overburden is 9.6 m, the weighted average content of zircon 6 kg/m³, rutile 8.4 kg/m³, conditional ilmenite - 50 kg/m³, opening ratio - 2.6.

Available geological information

The promising accumulation was discovered during a photogeologic survey at a scale of 1:50,000 of the Sumy city district (letters M-36-34-B, G and M-36-46-A, B) by Kharkiv geological exploration expedition in 1969–1972. In 1992, the promising accumulation was further examined and identified as one of the most perspective. Bilovodske promising accumulation is a part of the Korchakiv ore field.

The prospective area is recommended for greenfield exploration.

http://geoinf.kiev.ua/wp/geologichni-zviti.php?rep=fnd_shifr.rdf&schifr=34376

http://geoinf.kiev.ua/wp/geologichni-zviti.php?rep=fnd_shifr.rdf&schifr=53852

Resources/reserves assessment

Pre-calculated forecast resources of titanium-zirconium ores by category P2.

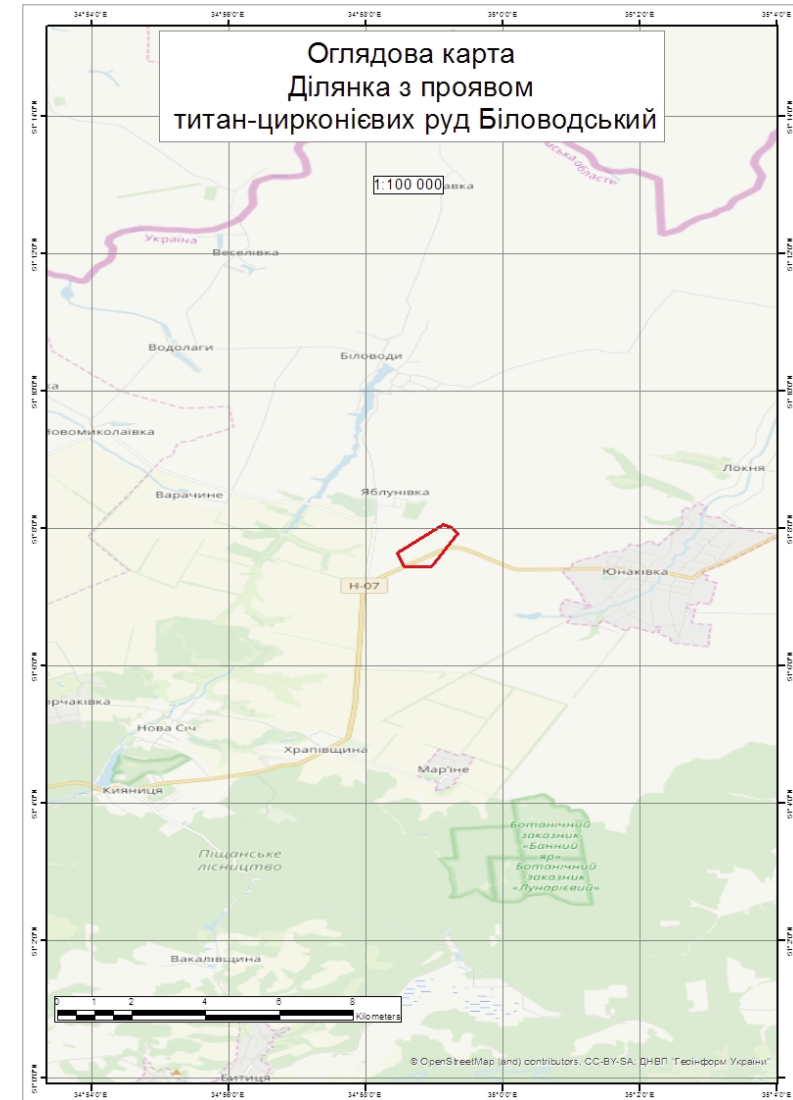
Resource information has limited access.

Minimum work program

Provided by agreements on terms and conditions of subsoil resources use and defined in the Work Program appendix.

Sample agreements can be found at: <http://www.geo.gov.ua/primirniaugodiaproaumoviakoristuvannyaanadrami/>.

Estimated initial cost of the lot: to be calculated.



NN	ШиротаPulkovo42	ДовготаPulkovo42	ШиротаWGS84	ДовготаWGS84
1	51° 7' 38,458" N	34° 58' 33,855" E	51° 7' 37,914" N	34° 58' 27,551" E
2	51° 8' 3,633" N	34° 59' 14,230" E	51° 8' 3,090" N	34° 59' 7,927" E
3	51° 8' 0,943" N	34° 59' 22,109" E	51° 8' 0,400" N	34° 59' 15,806" E
4	51° 7' 56,022" N	34° 59' 27,226" E	51° 7' 55,479" N	34° 59' 20,923" E
5	51° 7' 26,899" N	34° 59' 3,694" E	51° 7' 26,355" N	34° 58' 57,392" E
6	51° 7' 27,219" N	34° 58' 40,146" E	51° 7' 26,675" N	34° 58' 33,843" E

BILOVODSKE PROSPECTIVE AREA WITH TITANIUM – ZIRCONIUM ORES PROMISING ACCUMULATION

List of cadastral numbers of land plots, within the contour of the deposit



Information on land plots, in particular by cadastral number, can be obtained on the Public Cadastral Map of Ukraine:
<https://cutt.ly/Fx0CuBg>

- 1 5924785900:01:003:0065
- 2 5924785900:01:003:0064
- 3 5924785900:01:003:0063
- 4 5924785900:01:003:0202
- 5 5924785900:01:003:0055
- 6 5924785900:01:003:0080
- 7 5924785900:01:003:0081
- 8 5924785900:01:003:0193
- 9 5924785900:01:003:0192
- 10 5924785900:01:003:0194
- 11 5924785900:01:003:0195
- 12 5924785900:01:003:0206
- 13 5924785900:01:003:0057
- 14 5924785900:01:003:0085
- 15 5924785900:01:003:0086
- 16 5924785900:01:003:0060
- 17 5924785900:01:003:0061
- 18 5924785900:01:003:0090
- 19 5924785900:01:003:0091
- 20 5924785900:01:003:0062
- 21 5924789500:03:001:0165
- 22 5924789500:03:001:0100
- 23 5924789500:03:001:0164
- 24 5924789500:03:001:0155
- 25 5924789500:03:001:0108
- 26 5924789500:03:001:0106
- 27 5924789500:03:001:0104
- 28 5924789500:03:001:0153
- 29 5924789500:03:001:0151
- 30 5924789500:03:001:0152

- State / municipal property
- Private property
- Not specified

