

EASTERN PROSPECTIVE AREA OF WASHERY REFUSE OF WEATHERED ORES OF MAZURIVSKE FIELD

Mineral: pegmatite (feldspar), accompanying minerals: zirconium and niobium ores.

Type and period of subsoil use: production, 20 years.

Location: Volnovakha district of Donetsk region, at a distance of 600 m southwest of the outskirts of Donskoe village and 12 km south of the district center and the railway Volnovakha station. The distance to the nearest point of the demarcation line is 16 km.

Plot area: 8.8 ha.

Geological summary. The mineral includes waste - tailings of weathered rare-metal ores, which by their particle size distribution belong to sands, sandy-aleurolite deposits" and loams. Sands represent the upper layer of accumulations are formed by 82% of fragments larger than 0.1 mm and form a cloak-like deposit with a thickness of 3.0 m (st. 10) to 23.9 m (st. A + st. 15)/2 on average - 7.42 m, the area of sands in the plan is 78.9 thousand m². Sandy-silt deposits occur in the middle part of the sectional view, the proportion of fragments is less than 0.1 mm and is about 36%, the thickness of the layer varies from 0 (st. 3) to 15.79 (st. 1), the average thickness is 3.9 m, comparing them with sand by the area of distribution they are inferior. Loam - the finest material occurs in the lower part of the dump in the southern and southwestern part of the area, its average thickness is 3.86 m, the area of distribution - 19 thousand m², they are significantly inferior to sand and sandy-silt deposits. According to the results of laboratory studies, the mineral is represented by technological grades A, B, V, which are allocated according to chemical analyzes of core samples in sands and A1, B1, V1 - in sandy-silt deposits. The selected varieties are not geometrized and their reserves can be considered only statically. Hydrogeological and mining-geological conditions of waste field development allow mineral extraction by the way of surface mining. The projected water inflow to the quarry, including the inflow of precipitation that is 547 m³/ day. When developing scree and drifts, it is recommended to determine the height of the ledge experimentally in the process of developing enrichment waste. Gaseousness in the waste was not manifested.

Available geological information: beneficiation wastes are the tailings of the weathered ore processing of Mazury field that was developed in the way of surface mining in 30s and 60s of the last century. Tested balance reserves of feldspar raw materials meet the requirements of GOST 13451_77 and TU U 23.9_38996146_001: 2014.

Resources/reserves assessment. Mineral reserves were approved for the first time by the protocol of the State Commission of Ukraine on Mineral Reserves as of 16.09.2005 #1012. In 2017, the State Commission of Ukraine on Mineral Reserves by the protocol as of November 30, 2017 #4176 allocated a separate object of subsoil use - a deposit of sand products. Approved balance reserves of feldspar raw materials are in category B+ C1 (class code 121) 825743 tons, off-balance reserves of accompanying useful components in sand products with an average content of ZrO₂ 0.172% and Nb₂O₅ 0.095%. Information on reserve quantity of zirconium dioxide and niobium pentoxide is limited. The presence of the remaining reserves of sandy-silt deposits, loams and resources of accompanying useful components of uncertain industrial value that lie outside the selected facility and assessed by the protocol of the State Commission of Ukraine on Mineral Reserves #1012 as of 16.09.2005 in the amount of: sandy-siltstone class code 332 in category C2 - 199.1 thousand tons; Loam class code 332 in category C2 - 105.8 thousand tons; niobium pentoxide with an average mineral content - 0.09%; zirconium dioxide with an average mineral content - 0.11%. There are coordinates of the prospective are combined according to both protocols in the plan.

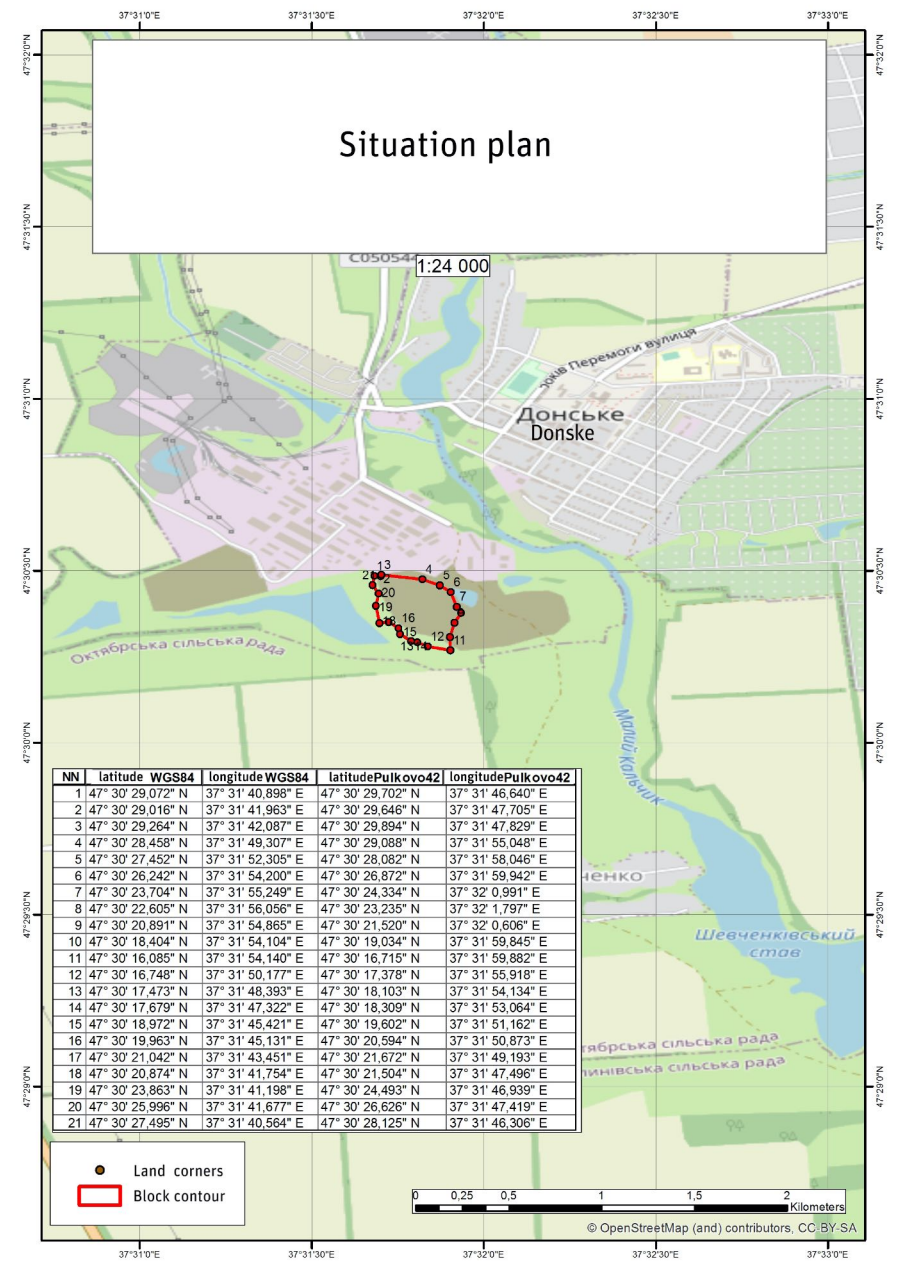
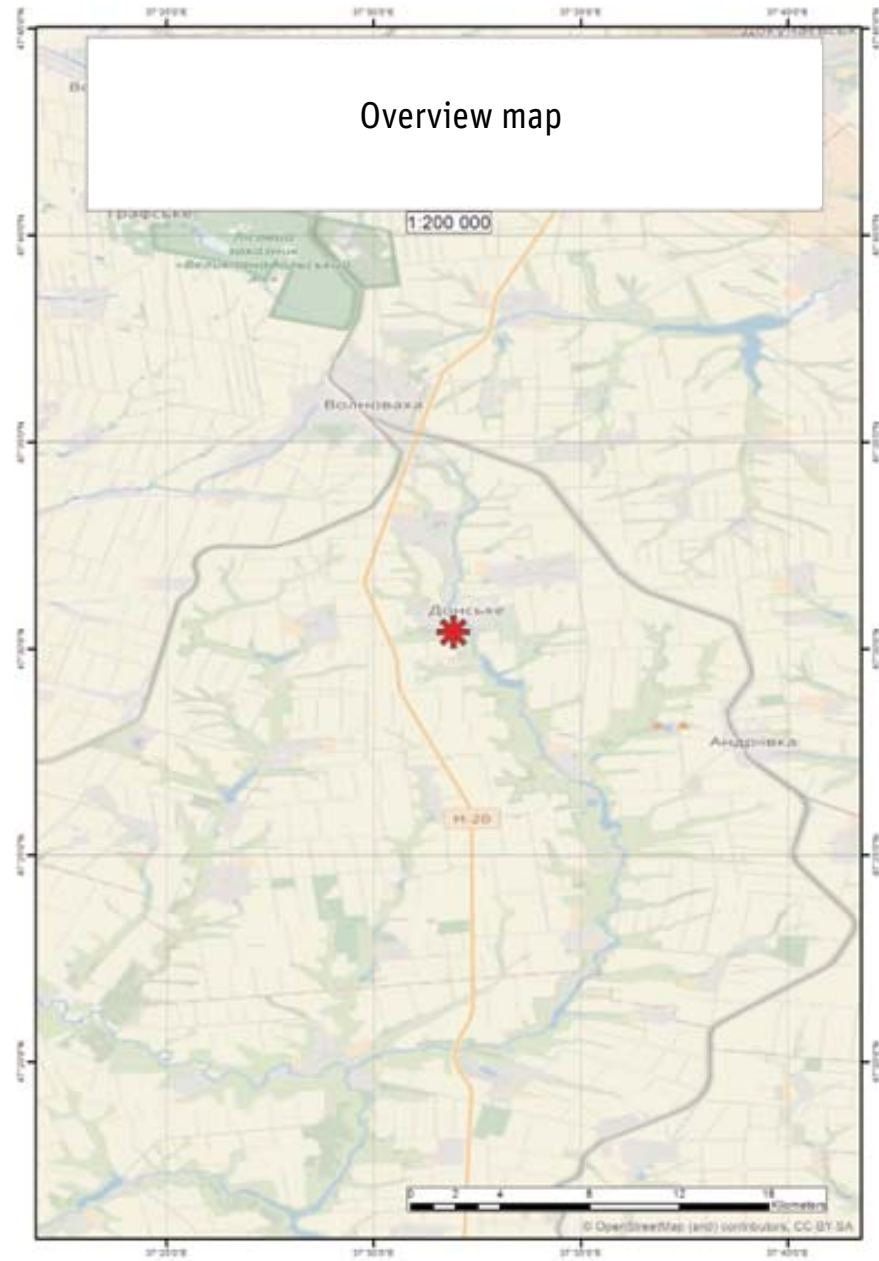
http://geoinf.kiev.ua/wp/geologichni_zviti.php?rep=fnd_shifr.rdf&schifr=60035

http://geoinf.kiev.ua/wp/geologichni_zviti.php?rep=fnd_shifr.rdf&schifr=65874

Minimum work program. Provided by Mining terms Model agreements and defined in "Work Program" annex. Model agreements are listed at the link:

<https://www.geo.gov.ua/primirni-ugodi-pro-umovi-koristuvannya-nadrami/>

EASTERN PROSPECTIVE AREA OF WASHERY REFUSE OF WEATHERED ORES OF MAZURIVSKE FIELD



EASTERN PROSPECTIVE AREA OF WASHERY REFUSE OF WEATHERED ORES OF MAZURIVSKE FIELD

List of cadastral numbers of land plots, within the contour of the deposit



1421555900:02:000:0035
State / municipal property

*Information on land plots,
in particular by cadastral number,
can be obtained on the
Public Cadastral Map of Ukraine:
<https://cutt.ly/Fx0CuBg>*

